



[OUR ROOMS](#) [OUR PRICES](#) [FOOD AND DRINK](#) *The Hilton Park Hotel* [CONFERENCE FACILITIES](#) [LOCATION](#) [CONTACT](#)  
[ABOUT](#)

## ABOUT THE HILTON PARK HOTEL



Set in spectacular Sussex countryside with magnificent views of the South Downs, this delightful independently owned Victorian country house hotel is situated between the picturesque village of Cuckfield and the lively market town and business centre of Haywards Heath.

The Hotel is surrounded by three acres of beautifully landscaped gardens and is approached from the main road by a sweeping circular driveway.



Relax in the Bar or on the terrace and enjoy the views of the South Downs and wildlife in the garden – sometimes, deer, foxes, rabbits, squirrels, woodpeckers and hawks can be seen or enjoy the peace and tranquillity of the Drawing Room.



If you feel energetic, there are hiking trails from the hotel and locally on the High Weald, North Downs Way, South Downs Way and Ashdown Forest.

There is also a helicopter landing area for the sole use of guests whether it is for business or leisure.

The many attractions of Brighton include: The Lanes, the Pavillion, the Palace Pier, the Marina, a diverse selection of restaurants, bars and clubs, and of course the beach are all close at hand.



Download FLASH [here](#) for the navigation header panel if you cannot see it. If your browser indicates blocked content and you cannot see the navigation header, allow the blocked content.



[OUR ROOMS](#) [OUR PRICES](#) [FOOD AND DRINK](#)

*The Hilton Park Hotel*  
[ABOUT](#)

[CONFERENCE FACILITIES](#)

[LOCATION](#)

[CONTACT](#)

## OUR ROOMS

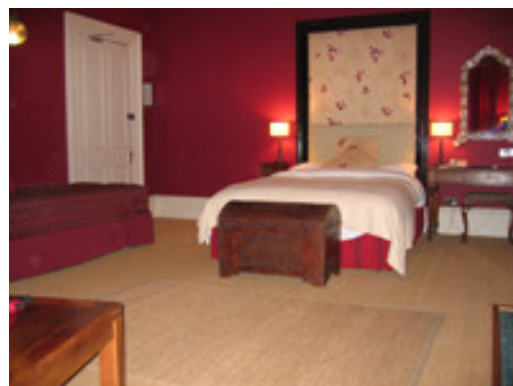
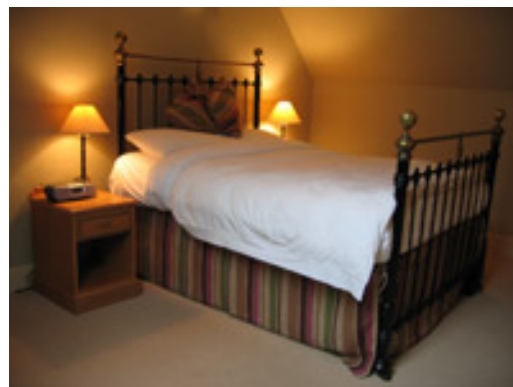
Our accommodation is comprised of eleven tastefully furnished and extremely comfortable bedrooms featuring luxurious pocket sprung beds, en-suite facilities, direct dial telephones with internet access points, satellite TV, trouser press, iron and ironing board and hair dryer.

There are three family rooms and all rooms are available for single occupancy.

The rooms are broken down into three separate categories;

Standard rooms, Superior rooms and Deluxe rooms.

The rates for these rooms can be found in Our Prices.





[OUR ROOMS](#)   [OUR PRICES](#)   [FOOD AND DRINK](#)   *The Hilton Park Hotel*   [CONFERENCE FACILITIES](#)   [LOCATION](#)   [CONTACT](#)  
 ABOUT

## PRICES

### DAILY TARIFF

Inclusive of double room with private bathroom, english breakfast, direct dial telephone, satellite television, trouser press, hairdryer and VAT.

Occupancy	Standard	Superior	Deluxe South Down
Single	£80	£90	£100
Double or Twin	£115	£125	£135

### BARGAIN BREAK

Daily rates for a minimum stay of three nights

Occupancy	Standard	Superior	Deluxe South Down
Single	£75	£85	£95
Double or Twin	£105	£115	£125

Children under 16 sharing a family room with two adults are charged £10 per child.

#### Cancellation Policy

24 hours midday Monday to Thursday inclusive.

7 days midday Friday to Sunday inclusive. Late cancellations will incur a full charge for at least the first nights accommodation.

Failure to cancel will incur a full charge for the value of the booking

### REDUCED WINTER WEEKEND RATES

From the beginning of November 2005 until the end of February 2006. All rates based on two people sharing.

£95.00 For a standard or superior double room (includes full English breakfast and VAT)

£120.00 For a deluxe double room (includes full English breakfast and VAT)

This offer is available for every weekend during this period except 9th to 11th December and 23rd to 25th December.



[OUR ROOMS](#) [OUR PRICES](#) [FOOD AND DRINK](#)

*The Hilton Park Hotel*  
[ABOUT](#)

[CONFERENCE FACILITIES](#) [LOCATION](#) [CONTACT](#)

## FOOD AND DRINK



The Restaurant offers an à la carte menu with an emphasis on freshly prepared meals using local and Organic ingredients where possible. We also aim to provide a relaxed and personal service.

The Restaurant is available for residents only and groups of four people or more should book in advance to avoid disappointment.

Full English breakfast is available to non-residents at £12.50 per person

The Restaurant is open from 7pm and last orders are taken at 8.30pm.  
Room service is available from 6pm and last orders are taken at 9.30pm



[OUR ROOMS](#) [OUR PRICES](#) [FOOD AND DRINK](#) *The Hilton Park Hotel* [CONFERENCE FACILITIES](#) [LOCATION](#) [CONTACT](#)  
[ABOUT](#)

## CONFERENCE FACILITIES

The Hotel has two tastefully appointed meeting rooms available.

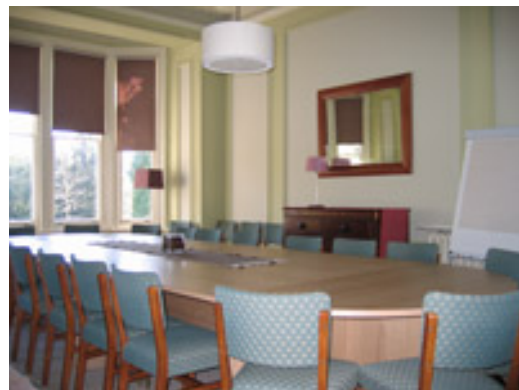
The smaller of the two can hold up to six people and is charged at £100 inc. VAT for a full day.

The larger room can hold up to twenty people and is charged at £150 inc. VAT per day.

(Tea/Coffee and biscuit breaks are charged at £3.50 per person. Sandwiches and Pannini's are available at £4.00 and £4.50 respectively and should be ordered in advance. Still or Sparkling mineral water is available.)

**Full day package:** This package includes a working or buffet lunch and three Tea/Coffee and biscuit breaks. This is charged at £45 to £50 inc. VAT per person respectively for a minimum of 6 people. Still or sparkling mineral water is available.

**Twenty-four hour rate:** (Maximum eleven people) This rate includes all of the full day package plus single accommodation and full English breakfast. This is charged at £125-£140 inc VAT for Standard or Superior accommodation respectively.





[OUR ROOMS](#) [OUR PRICES](#) [FOOD AND DRINK](#)

*The Hilton Park Hotel*  
[ABOUT](#)

[CONFERENCE FACILITIES](#) [LOCATION](#) [CONTACT](#)

## LOCATION

The Hotel is conveniently situated 1 mile from Haywards Heath train station with direct links to London, Gatwick Airport and Brighton. Gatwick Airport to the north and Brighton to the south are both 20 minutes by car or train. London Victoria is 45 minutes by train.

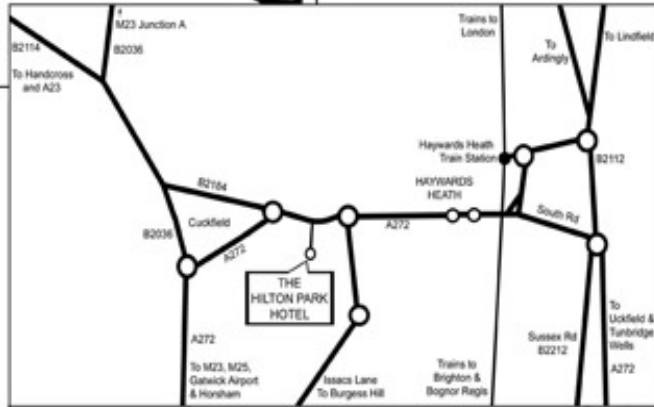
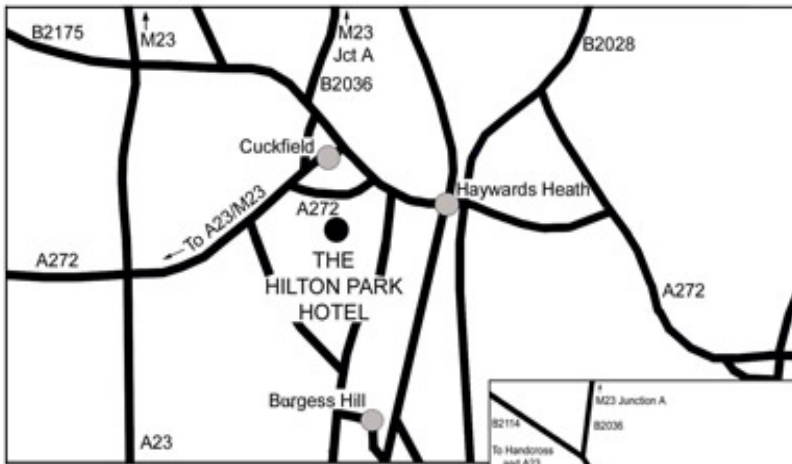
Other areas within easy reach by car are: M25 – 30 minutes, Glyndebourne Opera – 45 minutes, Ashdown Forest – 30 minutes.

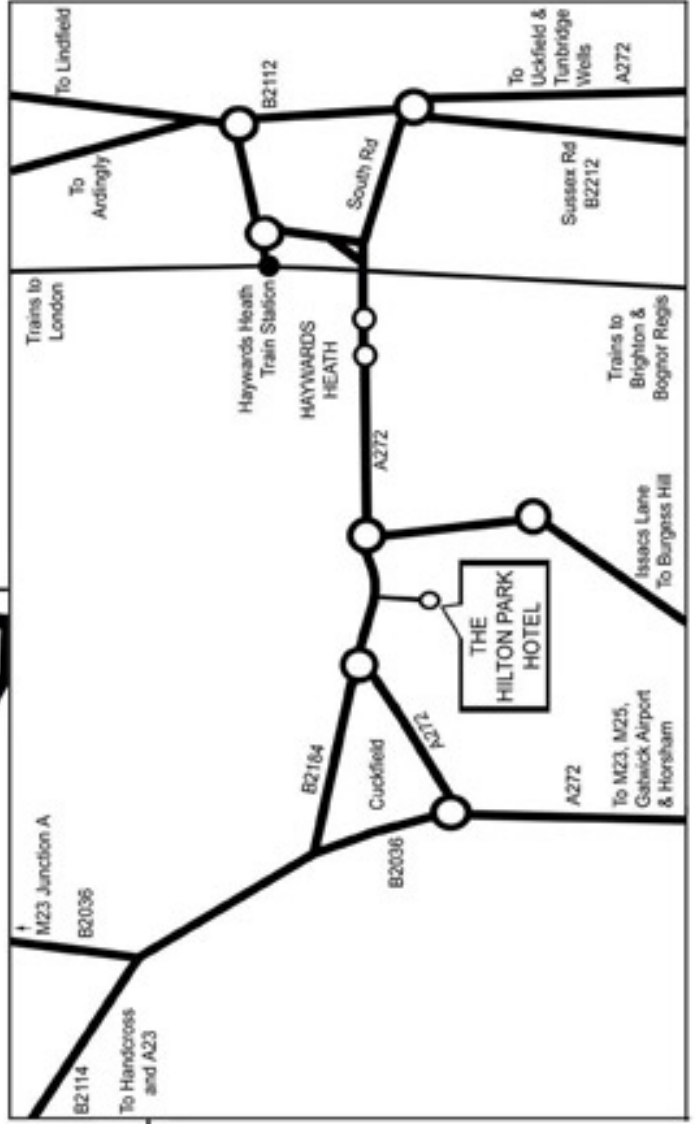
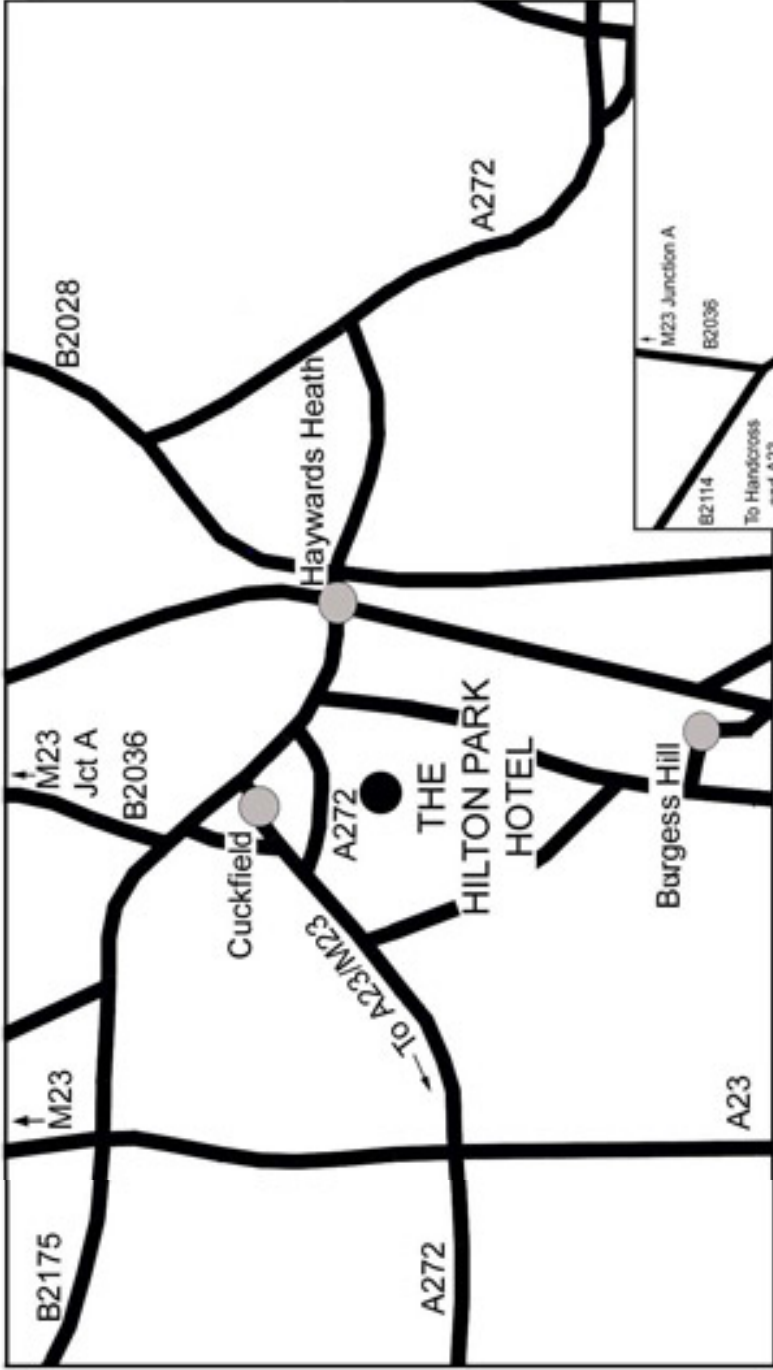
Beautiful Sussex Gardens such as Wakehurst Place with the Millennium seed bank, Nymans, Borde Hill, Sheffield Park, Leonardslee or the Bluebell railway are all within a 10-minute drive.

### How to find us

Travelling south on the A23/M23 turn left at the sign for Cuckfield and Haywards Heath onto the A272. Follow this road bypassing Cuckfield village towards Haywards Heath, and we are on the right hand side set back about quarter of a mile from the main road. Alternatively, those coming from the M23 and the north can turn off at Junction 10A on the M23 and take signs for Cuckfield via Balcombe village. In Cuckfield village centre, turn left onto the A272 towards Haywards Heath and we are one mile from the village on the right hand side.

A map for printing can be found here: [PRINTABLE MAP](#)







OUR ROOMS   OUR PRICES   **FOOD**  
AND DRINK

*The Hilton Park Hotel*  
ABOUT

CONFERENCE  
FACILITIES   LOCATION   CONTACT

## CONTACT

Enquiries and reservations please call:

0044 (0) 1444 454555

Or alternatively you can fax us on:

0044 (0) 1444 457222

The Hotel only accepts bookings via telephone, however, you can  
e-mail any enquiries to:

[info@hiltonparkhotel.co.uk](mailto:info@hiltonparkhotel.co.uk)